

INNOSILICON

T2T-32T BTC USER MANUAL



Table of Contents

1. OVERVIEW	1
2. ASSEMBLE THE MINER	2
2.1 Check the miner before power on	2
2.2 Connect the PSU	3
3. OPERATE THE MINER	4
3.1 Enter the miner console	4
3.2 Set up the pool	4
3.3 Check the hashrate of the miner	5
3.4 Network configuration	5
3.5 Other pages	6
3.5.1 Overview	6
3.5.2 Upgrade	6
3.5.3 Modify the password	7
3.5.4 Reboot	7
3.5.5 Factory reset	7

1. OVERVIEW



Part Number	T2T-32T
Hashrate	32T(±5%)
Power	2200w(±10%)
Algorithm	Sha256
Size (L×W×H)	460mm(L)*160mm(W)*236mm(H)
Net Weight	13.9KG
Operating Temperature	0-40
Network Connection	Ethernet

2. ASSEMBLE THE MINER

2.1 CHECK THE MINER BEFORE POWER ON

- Check the warranty sticker is well or not, especially the hashboards PSU port side. If the warranty sticker is damaged when you received the miner, please contact our After-sales.
- Before you power on the miner, shake the miner softly, if you can hear the sound of metal banging on metal, please contact our After-sales.
- Check if the fan work well, if you find the fans broken please contact our After-sales.
- The cable connection should be same as it arrived.



2.2 CONNECT THE PSU

Connect the miner and the router by the Ethernet cable, then the miner can start to run after power on the miner.



1. IP SET button:

Press it 1—4 seconds, it will (1) show the IP of the miner in the “Set IP” tool; (2) change the miner to Static IP mode and modify the IP to the IP range you set in the “Set IP” tool

Press it 4—15 seconds, the miner will become to DHCP and the settings of the miner should be restore to default.

Press it more than 20 seconds to switch the Dynamic (Static) IP to Static (Dynamic)

2. **RESET button:** Your miner will restart if you press it..

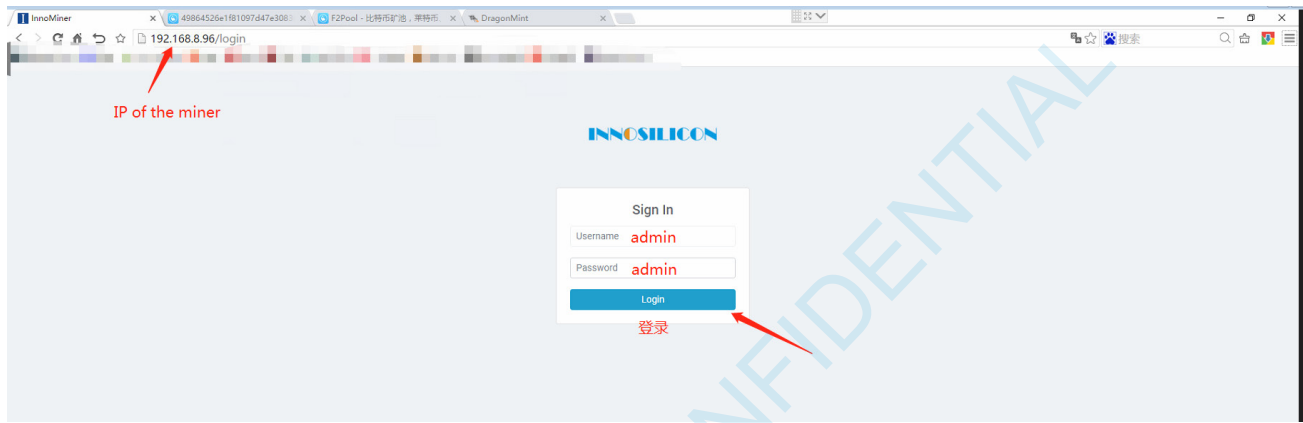
3. **Fault led:** light means the network connection is bad

4. **Normal led:** Solid means Static IP mode;Blinking means DHCP mode(DHCP)

3. OPERATE THE MINER

3.1 ENTER THE MINER CONSOLE

DHCP is the default IP mode of the miner, find the IP via the router or the IP scanner. Enter the IP of the miner on the browser and press the Enter button. Chrome is the suggested browser. (Please try with dragonadmin If the password admin is invalid)



3.2 SET UP THE POOL

Please use the suggested pool as below:

1 ckpool: stratum+tcp://cn.ckpool.org:443
or stratum+tcp://pool.ckpool.org:3333

2 slushpool: stratum+tcp://stratum.slushpool.com:3333

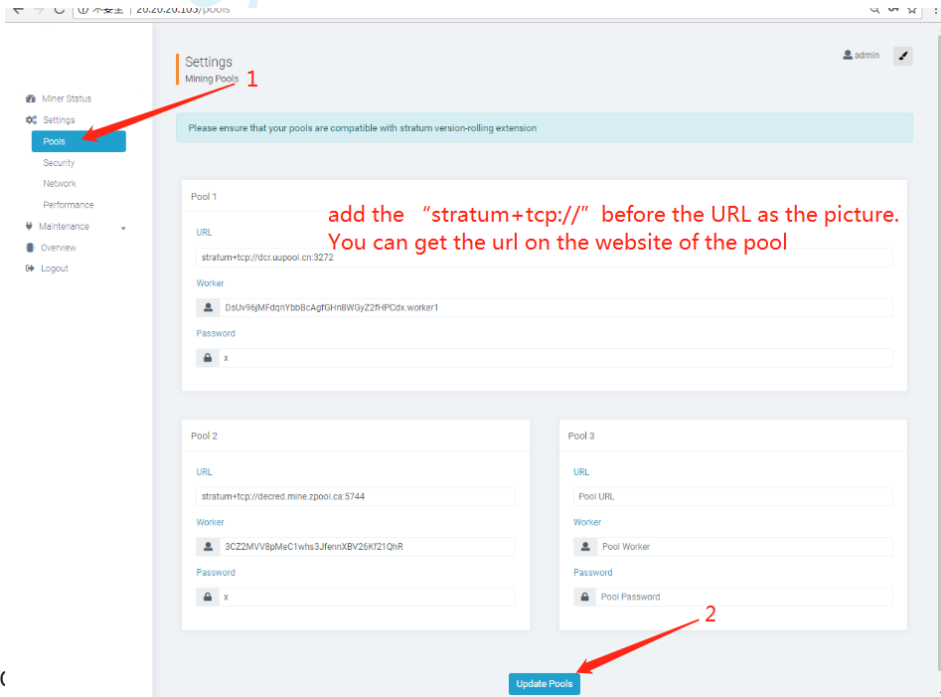
3 f2pool: stratum+tcp://btc-65536.f2pool.com:3333

4 btc.top: stratum+tcp://t2.btc.top:8888

or stratum+tcp://bak.t2.btc.top:3333

5 poolin: stratum+tcp://btc-bj.ss.poolin.com:1800

or stratum+tcp://btc-sz.ss.poolin.com:1800



3.3 CHECK THE HASHRATE OF THE MINER

After set up the pool, the miner will mine for you.

The screenshot shows the 'Miner Status' dashboard. On the left, a sidebar menu has 'Miner Status' highlighted with a red box. The main content area includes a warning banner, a summary of key metrics, a line graph, a pool list, and a miner info table.

Summary Metrics:

- 50m up time
- 99.9% (1539/1) accepted rate
- 2.35 TH/s hash rate
- 100% fan speed

hashrate graph: A line graph showing hash rate over time for Chain 1, Chain 2, Chain 3, and Total. The Total hash rate is highlighted with a red box and labeled 'hashrate graph'.

the using pool: A table listing active pools. The first pool is highlighted with a red box and labeled 'the using pool'.

#	Pool	User	Status	Get Works	Accepted / Rejected
1	stratum-tcp://dcr.uupool.cn:3272	DslUv96jMFdqnybbBcAgfGHnsWgyZ2fHPDcx.worker1	Alive	27	1539/1
2	stratum-tcp://decred.mine.zpool.ca:5744	3C2ZMvV8pMeC1whs3JfemXBV26Kf21QhR	Dead	0	0/0

hashrate of per hashboard: A table showing hash rate for individual hashboards.

#	Hash Rate	Status	Accepted	Rejected	HW	Temperature
1	784.79 GH/s	Alive	474/0		3	63 °C
2	784.79 GH/s	Alive	519/1		1	63 °C
3	785.34 GH/s	Alive	546/0		5	61 °C

3.4 NETWORK CONFIGURATION

The screenshot shows the 'Settings - Network' configuration page. A red arrow labeled '1' points to the 'Network' menu item in the sidebar. A red arrow labeled '2' points to the 'Update' button at the bottom of the settings form.

if you want to use the static IP, please click here unselect the DHCP

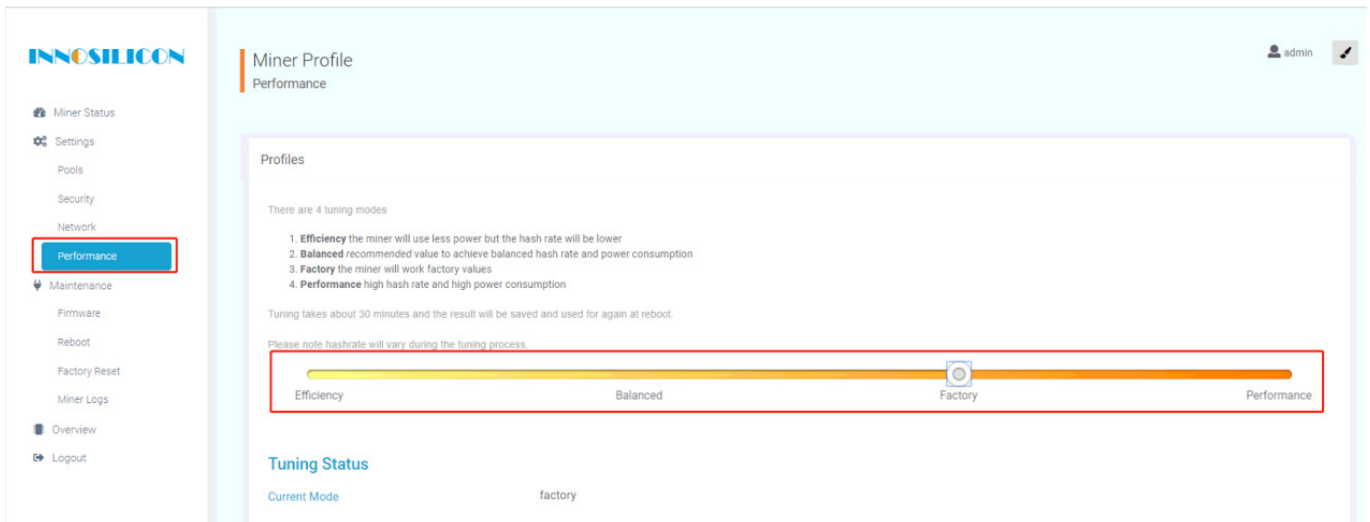
Network Settings:

- DHCP: Please check this box if you want the miner to receive an IP address automatically from your DHCP server.
- IP: 20.20.20.105
- Netmask: 255.255.255.0
- Gateway: 20.20.20.1
- DNS 1: 208.67.222.222
- DNS 2: Name Server 2

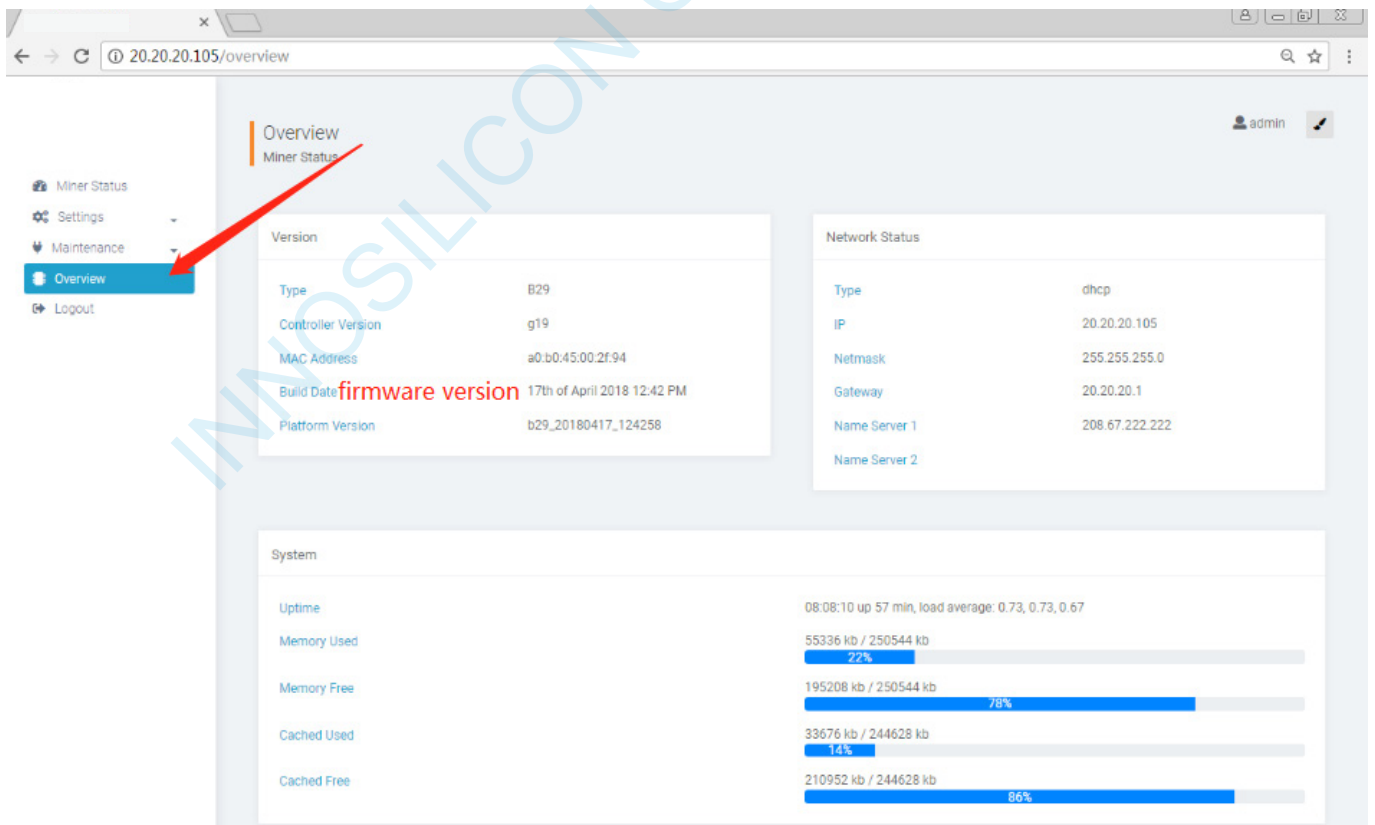
3.5 OTHER PAGES

3.5.1 CHANGE THE OPERATE MODE

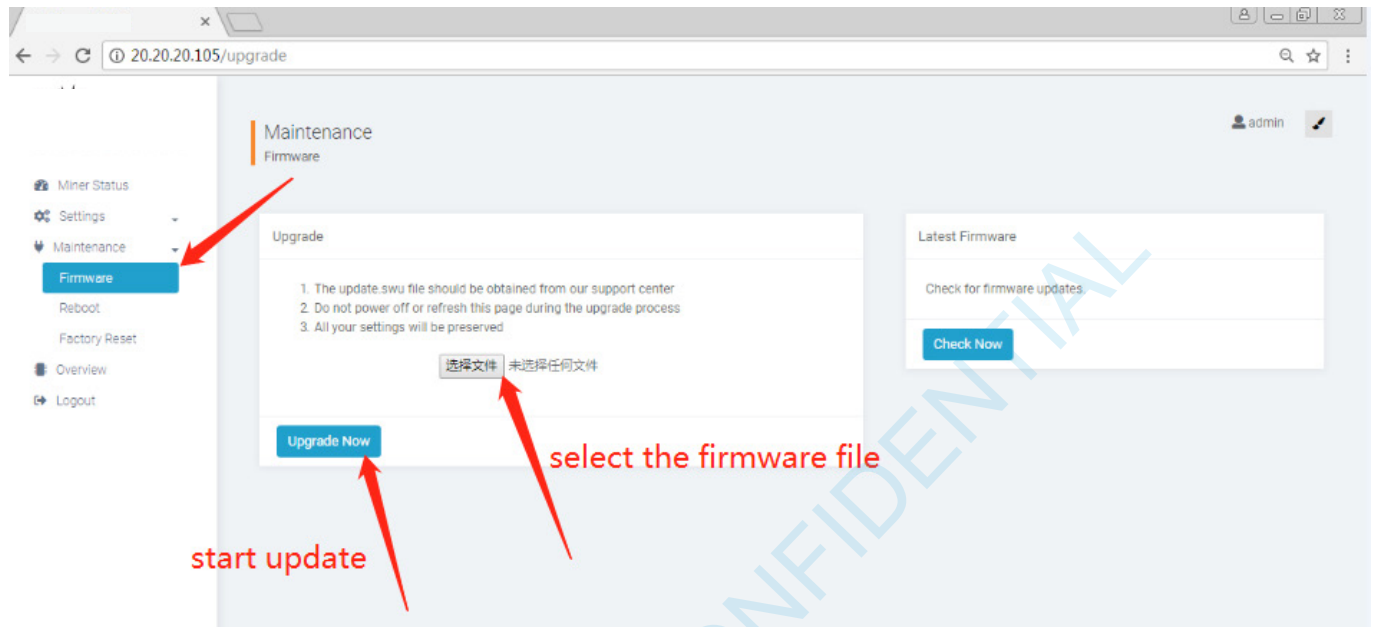
There are 4 modes can be choosed, please click the “Save” after you set the mode.



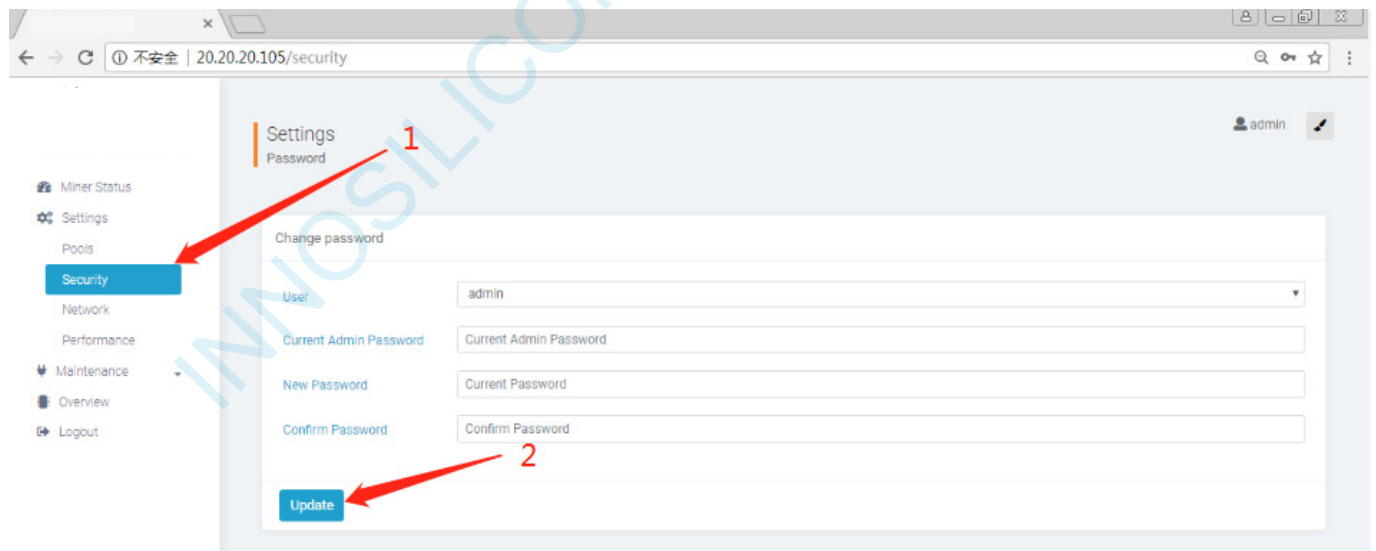
3.5.2 OVERVIEW



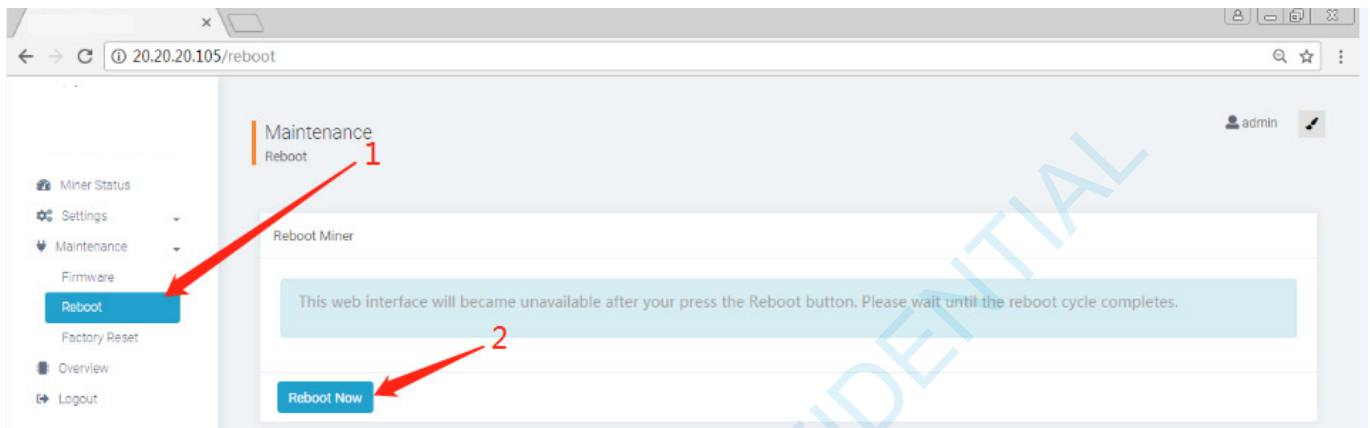
3.5.3 UPGRADE



3.5.4 MODIFY THE PASSWORD



3.5.4 REBOOT



3.5.5 FACTORY RESET

